

SEISMIC AND STRUCTURAL SERVICES

April 12, 2024

REQUEST FOR QUALIFICATIONS

MAMMOTH COMMUNITY WATER DISTRICT

MAMMOTH LAKES, CALIFORNIA





REQUEST FOR QUALIFICATIONS

Seismic and Structural Risk Analysis Assessment Services

TABLE OF CONTENTS

1	INTRODUCTION	2
2	SCOPE OF SERVICES	4
3	RFQ REQUIREMENTS	6
4	SELECTION CRITERIA & PROCESS.....	7
5	SUBMITTAL INSTRUCTIONS	8

ATTACHMENTS:

Attachment 1 – Mammoth Lakes Location Overview

Attachment 2 – Facility and Asset List for Assessment

Attachment 3 – Sample Master Services Agreement



1 INTRODUCTION

The Mammoth Community Water District (District) is seeking a qualified consultant to provide seismic and structural analysis services for drinking water, wastewater, and recycled water facilities and infrastructure. The District is the sole provider of domestic water, recycled water, and sanitary sewer services to the Town of Mammoth Lakes (TOML). Located on the east side of the Sierra Nevada Mountain Range above 7,000 ft amsl, Mammoth Lakes is the headwaters of Mammoth Creek on the eastern side of the crest, and the San Joaquin River on the west side of the crest. Mammoth Lakes' economy is primarily driven by tourism to the Mammoth Mountain Ski Area, as well as a range of other outdoor activities and its proximity to the eastern entrance of Yosemite National Park. Due to the regular influx of tourists the population of the town varies from 8,500 to over 30,000 during peak holidays, requiring a dynamic approach to water supply and wastewater treatment.

The Mammoth Lakes region has an active seismic history including multiple M_w6 earthquakes in recent decades. USGS scenarios of $M_w6.7 - M_w6.9$ earthquakes along the Hartley Springs and Hilton Creek fault systems within the Long Valley Caldera have modeled Modified Mercalli Intensities between VII and VIII within in the District service area. Above-ground facilities are also regularly exposed to extreme snow loads. Storms from the winter of 2022-2023 caused damage to multiple District structures and measured snow loads were close to the updated snow loads in ASCE 7-22. The majority of the District's infrastructure was constructed in the 1970s – 1990s and to less strict building codes, standards, and performance goals than ASCE 7-22 and CBC-22.

The District is looking for a long-term partner to enter into a master services agreement (MSA) to provide technical support for structural assessments, risk evaluation and mitigation plans, and retrofit designs for a wide range of its facilities to inform our Capital Improvement Plan and asset management. The District's current water and wastewater infrastructure and associated facilities are tabulated below into Tier 1 (highest consequence/probability of failure) and Tier 2 (lower consequence/probability of failure) priorities based on preliminary assessments:

- | Tier 1 | Tier 2 |
|---|--|
| <ul style="list-style-type: none">• 3 drinking water treatment plants• 1 wastewater treatment plant• 9 above-ground treated water storage tanks• 2 below-ground treated water storage tanks• 3 miles ductile iron (DIP) raw water trunk lines• 2 miles asbestos cement (ACP) water main lines• 12 water or sewer mains crossing active fault lines• 4 water distribution pump station buildings• 8 sewer collection lift station buildings• 26 masonry buildings or structures | <ul style="list-style-type: none">• 10 groundwater wells<ul style="list-style-type: none">○ 6 below-ground vaults○ 4 above-ground buildings• 5 sewer collection lift station vaults• 22 pressure reducing station vaults• 67 miles DIP and 8 miles PVC water distribution and trunk main lines• 44 miles ACP, 14 miles PVC SDR-35, 10 miles PVC, and 6 miles vitreous clay (VCP) sewer collection and trunk lines• 5 miles DIP recycled water distribution lines |

Details of these assets can be found in **Attachment 2**.

The seismic and snow load assessments will focus on evaluating the vulnerabilities of key structures and facilities within the District service area, considering the geologically active and variable snowfall natures of the region. Greater reliability is desired than straight application of the California Building Code and other similar standards, where justified to provide recovery or continued service after extreme events. The selected firm will be expected to assess the impacts of seismic events and snow loads on existing infrastructure and provide recommendations for retrofits or operational changes to withstand these challenges.

The types of projects the District is seeking technical assistance for include:



- Assessing existing infrastructure for seismic and snow load structural resilience and performance goals
- Development of mitigation measures for District assets that do not meet desired structural performance goals
- Prioritization and designs for seismic and structural retrofit projects
- Technical reports and support for retrofit project grant funding applications

SITE VISIT: Prospective consultants are encouraged to visit the District and the Town of Mammoth Lakes. Please call or email Nick Holt to schedule a visit.

Key Submission Dates:

- Questions to District by: **5:00 PM Friday April 26, 2024**
- District Response to questions by: **5:00 PM Wednesday May 1, 2024**
- Digital submittal of RFQ to the District by: **5:00 PM Friday May 3, 2024**
- Interviews will be scheduled for the following week (**Week of May 6, 2024**)

The District reserves the right to reject all statements of qualification. The District may conduct interviews following the initial SOQ review to determine the most qualified consultant. The District will negotiate a master services agreement with the selected consultant and one or more initial task orders.

Dated: 4/12/2024

Mammoth Community Water District

By: Nick Holt

Nick Holt
Assistant Engineer



2 SCOPE OF SERVICES

The District is looking to establish a long-term relationship with a consultant to provide structural assessments, planning, and design support. The specific types of work and tasks required by the District will evolve over time based on regulatory requirements, operational changes, observed damage to facilities, etc., but our current needs include the tasks described below. More details on the Mammoth Lakes regional seismic history can be found in **Attachment 1 – Figure 1**. A tabulation of key Mammoth Community Water District facilities can be found in **Attachment 2**.

The scope of work includes:

1. Structural and seismic assessments of existing infrastructure – The District desires to assess the current condition of critical infrastructure identify vulnerabilities that would diminish our water and wastewater service capacities after natural disasters such as earthquakes and extreme winter snow loads, which have caused damage and disruptions in the last several decades. The District seeks a structural or civil engineering consultant to review AS-Built and records of existing buildings, tanks, pump stations, and other infrastructure to assess current structural systems, seismic detailing, and other relevant seismic and structural characteristics, and select suitable performance goals for these facilities. Based on these assessments and an understanding of the District’s water and wastewater systems, structural assessments will be conducted on the highest priority facilities, currently identified in the Tier 1 list. The District anticipates that ASCE 41-17 or 41-23 seismic assessments will be necessary for structures, equipment, and nonbuilding components required for operation at key drinking water facilities such as the drinking water treatment plants, pump stations, and treated water storage tanks; and wastewater buildings necessary for plant operation such as those housing the equalization pumps, RAS pumps, building, filtration and turbo air blowers, etc. Less critical facilities such as sewer collection lift stations, below-ground pressure reducing stations, etc. may be assessed by FEMA P-154 or similar assessments. Ground snow loads for calculations in assessments should utilize ASCE 7-22 ground snow loads. Winter 2022-2023 peak measured snow depths across the District’s service area were within 10% of ASCE 7-22 ASD snow loads for Risk Category IV. See **Attachment 1 - Figure 2** for sample seismic design parameters and snow loads from the ASCE 7-22 Hazard Tool around the District’s service area. The following provisions should be utilized for assessments:
 - Seismic and Snow Loads: Minimum Design Loads and Associated Criteria for Buildings and Other Structures (ASCE 7-22), American Society of Civil Engineers
 - Existing Buildings, Structures, and Equipment: Seismic Evaluation and Retrofit of Existing Buildings (ASCE 41-17 or 41-23), American Society of Civil Engineers
 - Reinforced Concrete Basins and Tanks: Environmental Engineering Concrete Structures (ACI 350-20), American Concrete Institute
 - Welded Steel Tanks: Welded Steel Tanks for Water Storage (ANSI/AWWA D100-21), American Water Works Association
 - Bolted Steel Tanks: Factory-Coated Bolted Steel Tanks for Water Storage (ANSI/AWWA D103-19), American Water Works Association
 - Buried pipelines: Seismic Guidelines for Water Pipelines (ALA 2005), American Lifelines Alliance
2. Risk evaluation and mitigation plans for existing infrastructure – Many of the District’s key facilities were constructed 30-50 years ago under less strict building codes and underestimation of extreme snow loads potential. Based on the seismic and structural assessments above, the Consultant shall identify and quantify risk using a Business Risk Evaluation (BRE), Benefit-Cost Analysis (BCA), or other analytical method. This will guide the development of a mitigation plan to prioritize retrofits, operational changes, and other actions that can be taken to reduce risks and maximize the District’s capacity to provide water and wastewater services after natural disasters such as firefighting response after earthquakes, forest fires encroaching on the wildland urban interface, and extreme winter snow loading. The District desires a greater level of reliability than straight application of the California Building Code and other similar standards, where justified to provide continued service or expedited recovery after extreme events.



3. Detailed designs for structural retrofits as prioritized by the mitigation plan - The District plans to pursue retrofits as directed by the mitigation plan or as needed to maintain system reliability and resilience to future natural disasters. It is expected that construction bidding and project management services will be managed in-house or by a separate party(ies) and completed based on future budgetary, seasonal access, operational needs, and workforce availability. Larger projects may be assessed using the FEMA Benefit-Cost Analysis (BCA) Toolkit for cost-effectiveness comparisons.
4. Preparation of and/or assistance with grant applications – As funds and resources dictate, the District may seek assistance with applications for retrofit project grant funding. Potential grant programs may include the Joint Powers Insurance Association (JPIA), California Governor’s Office of Emergency Services (CalOES) Hazard Mitigation Grant Program (HMGP), and other grant programs which require technical reports summarizing an existing asset’s structural properties, seismic vulnerabilities, expected performance and design parameters from a retrofit project, and retrofit project costs. It is expected that FEMA Full BCA or Streamlined BCA requirements will be needed to identify projects most likely to achieve Benefit-Cost Ratio (BCR) values of 1.0 or greater.



3 RFQ REQUIREMENTS

To be considered, a consultant responding to this RFQ must provide the following items and/or information in its proposal:

1. A cover letter which shall provide the following: name, title, address, email addresses, and telephone numbers of individuals with the authority to negotiate and contractually bind the Consultant.
2. A statement of the Consultant's qualifications, including brief biographical profiles of the company and key personnel who will be assigned to work on the project. Any relevant certifications or education should be identified. Any reports, recommendations, or calculations must be stamped by a licensed California Civil or Structural Engineer.
3. A brief list of relevant projects with dates and references that demonstrate the Consultant's ability to carry out the tasks listed in Section 2. The successful Consultant shall provide evidence of experience in performing ASCE 41-17 and/or ASCE 41-23 Tier 1 and Tier 2 evaluations of masonry and steel frame structures, ideally in regions with similar building construction methods and ages; seismic risk assessment of buried pipes, well vaults, pump stations, pipe galleries, and other underground infrastructure; structural assessments of buildings with snow or other loads applied above original design loads; structural and/or seismic assessments of tanks, heavy equipment, and appurtenances in water and wastewater treatment plants; seismic and structural risk evaluation and mitigation plans, especially for lifeline service providers; design of seismic and structural retrofits for the previously listed items; and preparation of technical reports of seismic retrofit projects for CalOES HMGP or similar grant funding applications.
4. A standard fee schedule for all positions expected to be involved in projects.
5. If needed, a list of sub-consultants, their potential roles, and qualifications.
6. A general statement on the ability to meet the minimum insurance requirements described in the sample MSA included as **Attachment 3**.
7. Any additional information demonstrating the Consultant's capabilities as related to the selection criteria listed below.



4 SELECTION CRITERIA & PROCESS

All RFP materials, any amendments, and questions/answers will be posted on the District's website at <https://www.mcwd.dst.ca.us>. Questions about this RFP are due by **5:00 p.m. on Tuesday, April 26, 2024**, and may be submitted by email. The District's responses to questions and requests for information will be posted online by **5:00 p.m. on Wednesday, May 1, 2024**. Proposals must be submitted in accordance with the requirements of Section 5 below.

A committee will then evaluate all qualifying proposals based on the following criteria and values:

<i>Item</i>	<i>Selection Criteria</i>	<i>Value</i>
1	Qualifications and experience performing seismic and structural assessments of municipal structures and infrastructure.	25 pts
2	Qualifications and experience developing seismic and structural risk evaluations and mitigation plans of municipal structures and infrastructure.	25 pts
3	Qualifications and experience with design, technical reports, and cost estimates of structural retrofits of masonry structures, steel buildings, water storage tanks, and other municipal water and wastewater equipment and infrastructure.	20 pts
4	Qualifications and experience with grant application support including design submittals and BCA procedures for mitigation projects.	10 pts
5	Qualifications of key staff and personnel.	10 pts
6	Demonstrated ability to effectively communicate and work with staff as a team, and demonstrated capability to meet schedules and complete projects without major cost escalations or overruns.	10 pts

The evaluation committee may select a contractor based on the above criteria, and/or may conduct phone interviews of the top-ranking contractors. In the event phone interviews are conducted, the final selection will be based on the outcome of such interviews.

The consultant selected to provide the services will be expected to enter into a Master Services Agreement with the District to govern the provisions of these services (see **Attachment 3** for sample MSA). Upon a written request by the District, Consultant shall prepare a specific scope of work, budget, and schedule for each task order. Upon written approval by the District to proceed, the Consultant shall proceed with completion of the work under the applicable task order.



5 SUBMITTAL INSTRUCTIONS

- **Deadline:** To be considered, a digital copy of the contractor's proposal responsive to this RFP must be submitted via email by **5:00 p.m. on Friday, May 3, 2024.**
 - Email Proposals to Nick Holt at: nholt@mcwd.dst.ca.us
- **Modification or Withdrawal of Submittals:** Any RFP received prior to the date and time specified above for receipt may be withdrawn or modified by written request of the contractor prior to the submittal deadline.
- **Property Rights:** RFPs received become the property of the District and all rights to the contents therein become those of the District.
- **Confidentiality:** Before award of the contract, all submittals will be designated confidential to the extent permitted by the California Public Records Act. After award of the contract (or if not awarded, after rejection of all submittals), all responses will be regarded as public records and will be subject to review by the public. Any language purporting to render all or portions of the submittals confidential will be regarded as non-effective and will be discharged.
- **Amendments to Request for Proposals:** The District reserves the right to amend this RFP by addendum before the final submittal date. Any amendments will be posted online at <https://mcwd.dst.ca.us/>.

Please contact Nick Holt, Assistant Engineer, at 760.934.2596 x310 or by email at nholt@mcwd.dst.ca.us, should you have any questions or comments regarding this request.

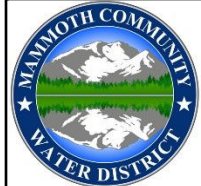
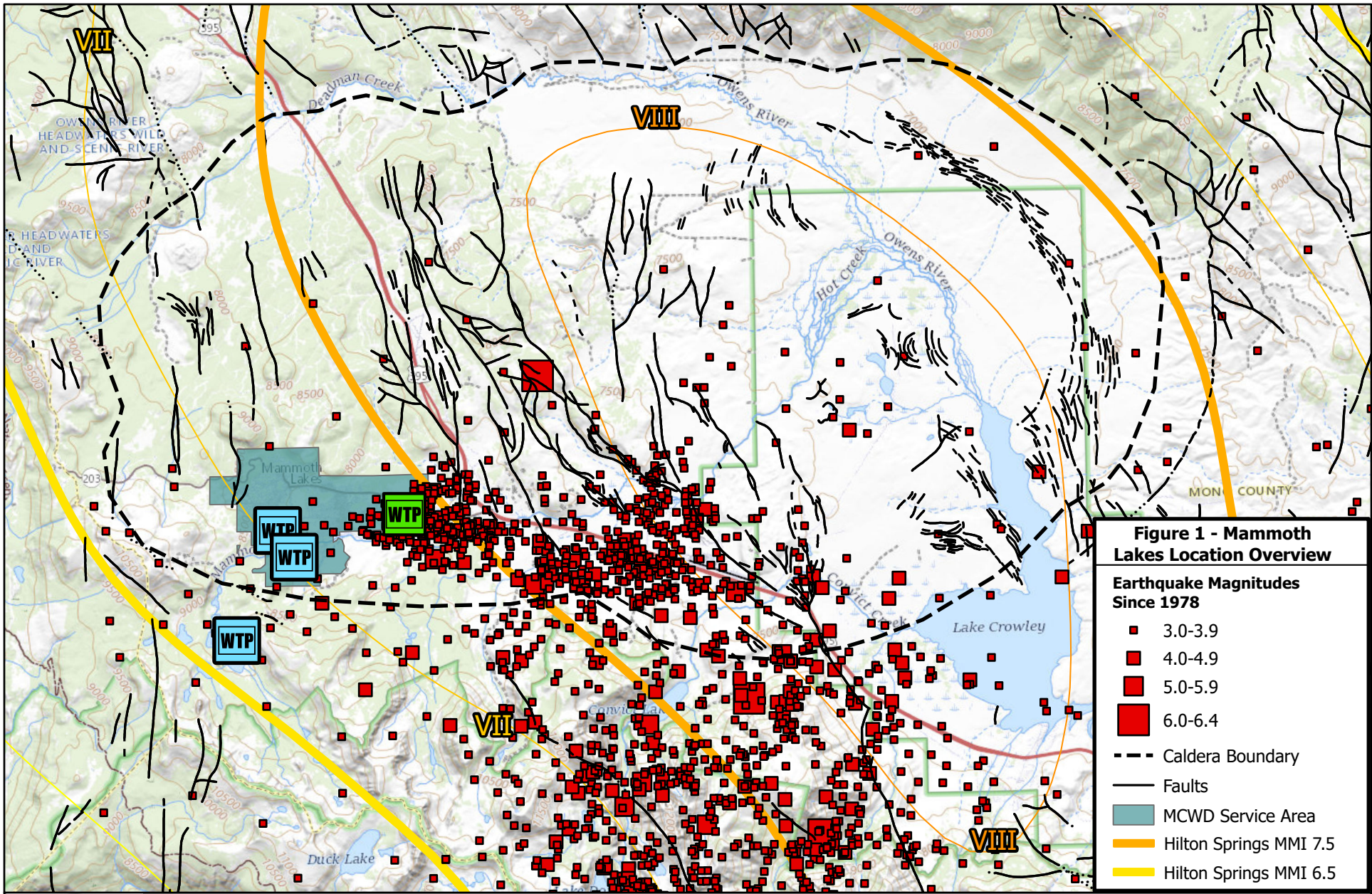
SEISMIC AND STRUCTURAL SERVICES

April 12, 2024

REQUEST FOR QUALIFICATIONS

ATTACHMENT 1 – MAMMOTH LAKES LOCATION OVERVIEW





**MAMMOTH COMMUNITY
WATER DISTRICT**

1315 Meridian Boulevard
 P.O. Box 597 Mammoth Lakes, CA 93546
 (760) 934-2596 Fax: (760) 934-2143



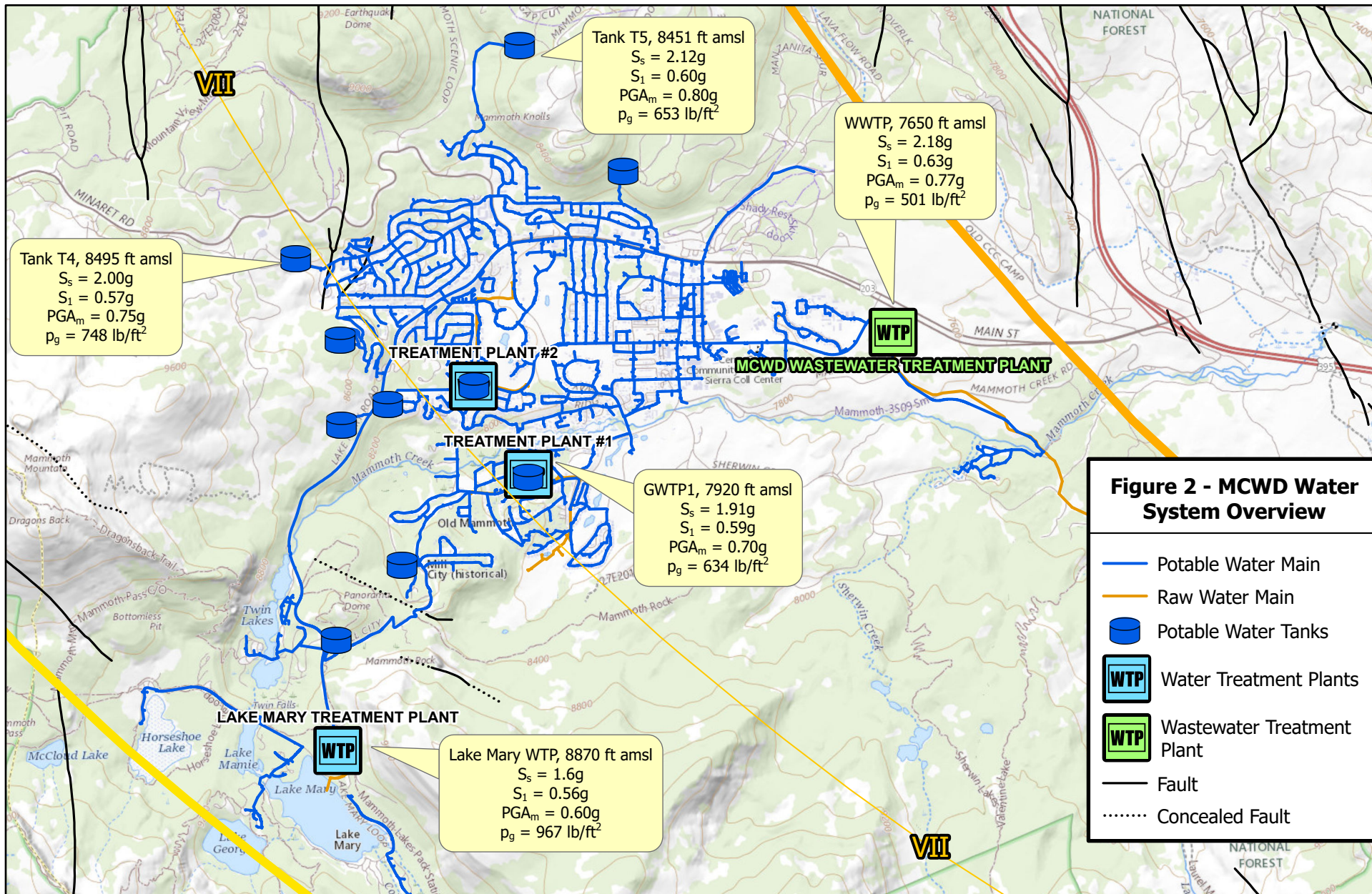


Figure 2 - MCWD Water System Overview

- Potable Water Main
- Raw Water Main
- Potable Water Tanks
- Water Treatment Plants
- Wastewater Treatment Plant
- Fault
- - - Concealed Fault



MAMMOTH COMMUNITY WATER DISTRICT

1315 Meridian Boulevard
 P.O. Box 597 Mammoth Lakes, CA 93546
 (760) 934-2596 Fax: (760) 934-2143



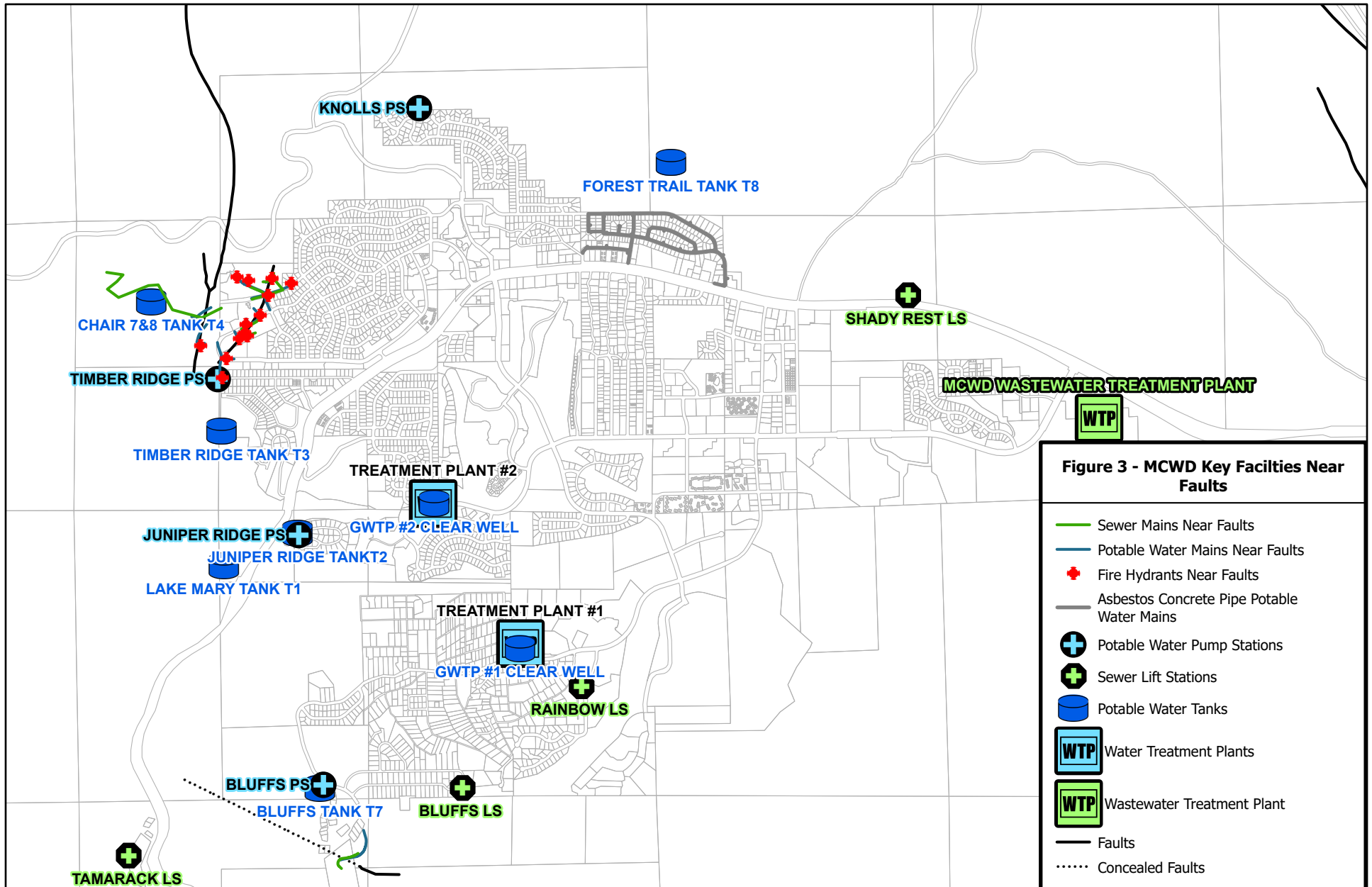


Figure 3 - MCWD Key Facilities Near Faults

- Sewer Mains Near Faults
- Potable Water Mains Near Faults
- Fire Hydrants Near Faults
- Asbestos Concrete Pipe Potable Water Mains
- Potable Water Pump Stations
- Sewer Lift Stations
- Potable Water Tanks
- Water Treatment Plants
- Wastewater Treatment Plant
- Faults
- Concealed Faults

SEISMIC AND STRUCTURAL SERVICES

April 12, 2024

REQUEST FOR QUALIFICATIONS

ATTACHMENT 2 – FACILITY AND ASSET LIST FOR ASSESSMENT



Treated Water Storage Tanks

Name	Dimensions	Capacity (gallons)	Construction Material	Year Constructed	Codes Referenced	Design Snow Load	AsBuilt	Designer / Contractor	Notes
GWTP #1 Clear Well	38' x 16'	83,400	Bolted Steel	2013	CBC-10	278 PSF	12304	Water Works Engineering	
GWTP #2 Clear Well	35' x 20' x 14' W x D x H	78,000	Concrete	1993	UBC-91	230 PSF	10389	Boyle Engineering	
T1 (Lake Mary WTP)	72' x 32' Dia x H	1,000,000	Welded Steel	1972	n/a	n/a	10370	Molina Engineering	
T2 (Juniper Ridge)	60' x 24' Dia x H	500,000	Welded Steel	1978	n/a	n/a	10277	Gram/Phillips	
T3 (Timber Ridge)	120' x 60' x 10' W x D x H	500,000	Concrete	1973	n/a	na	10381	Miller Engineering	
T4 (Chair 7 & 8)	51' x 33' Dia x H	500,000	Welded Steel	1969	n/a	n/a	10375	Molina Engineering	
T5 (Knolls)	76' x 32' Dia x H	1,000,000	Welded Steel	1986	n/a	n/a	11257	Gram/Phillips	
T6 (LMWTP Clearwell)	124' x 24' Dia x H	2,000,000	Welded Steel	1985	n/a	n/a	10368	Gram/Phillips	
T7 (Bluffs)	87' x 27' Dia x H	1,000,000	Welded Steel	2008	D100-05, ASCE 7-05, IBC-06	230 PSF	11880	Pacific Tank	
T8 (Forest Trail)	80' x 35' Dia x H	1,000,000	Welded Steel	2023	D100-21, ASCE 7-22	431PSF	12466	Crosno Construction	Prior tank failed in 2023 due to snow load
Lake Mary Backwash	35' x 7' Dia x H	50,000	Welded Steel	1979	n/a	n/a	10115	Gram/Phillips	

Water Treatment Plants

Name	Building Footprint	Capacity (MGD)	Year Constructed	Codes Referenced	Design Ground Snow Load	Original AsBuilt	Designer / Contractor	Additional AsBuilts	Notes
Lake Mary Water Treatment Plant	70' x 75'	3.1	1978	n/a	n/a	10115	Gram/Phillips	12904	Multiple expansions since 1978. Roof Trusses replaced 2018.
Groundwater Treatment Plant #1	45' x 100'	3.0	1988	n/a	n/a	10026	Boyle Engineering		
Groundwater Treatment Plant #2	50' x 100'	2.7	1994	UBC-91	230 PSF	10389	Boyle Engineering		

Wastewater Treatment Plant Facilities and District Yard Masonry Buildings

Name	Building Dimensions	Construction Material	Year Constructed	Codes Referenced	Design Ground Snow Load	AsBuilt	Designer / Contractor	Notes
Headworks		Reinforced Concrete	varies	varies			varies	Multiple expansions
Primary Clarifiers		Reinforced Concrete	varies	varies			varies	Multiple expansions
Aeration Basins		Reinforced Concrete	varies	varies				Multiple expansions
Secondary Clarifiers		Reinforced Concrete	1990	UBC-88			Brown and Caldwell	
Aerobic Digesters		Reinforced Concrete	2004	UBC-97			HDR	
Administration	75' x 105'	Slump Block	1971	UBC			Molina	
Laboratory and Operations	52' x 58'	CMU	1990	UBC-88	200 PSF		Brown and Caldwell	
Turbo Blowers and Filtration	40' x 80'	Slump Block	1971	UBC			Molina	Original WWTP mechanical building
Equalization Pumps	30' x 28'	CMU	1980				Gram/Phillips	Roof trusses failed in 2023
Sludge Drying, Storage, and Welding	55' x 140'	CMU	1980			11070	Gram/Phillips	Addition in 2004
Return Activated Sludge Pumping	23' x 27'	CMU	1990	UBC-88	200 PSF		Brown and Caldwell	
Recycled Water Pumping	25' x 55'	CMU	2009					
Chlorination	32' x 50'	CMU	1990	UBC-88	200 PSF		Brown and Caldwell	
Blockhouse PRV	15' x 15'	CMU	1978			10114	Gram/Phillips	
Vehicle Maintenance	30' x 85'	CMU	1975					
Pipe Gallery Access	8' x 8'	CMU	1980					
Chlorine Contact Tank Controls	12' x 12'	CMU						

Additional masonry structures are included in the following tables:
 Pressure Reducing Stations, Lift Stations, Pump Stations, Water Treatment Plants

Pressure Reducing Stations

Name	Status	Construction Material	Year Constructed	Building / Vault	Designer / Contractor	AsBuilt	AsBuilt Notes
TWIN LAKES PRV	ACTIVE - ?		7/1/1978	Vault	Gram/Phillips	10114	
TWIN LAKES CG PRV	CLOSED		10/1/1973	Vault	Gram/Phillips	10227	
JUNIPER RIDGE PRV	CLOSED		1/27/1989	Vault	Boyle Engineering	10092	
SNOWCREEK PRV	ACTIVE		1/27/1989	Vault	Boyle Engineering	10025	10025 is 10/15. Only shows Plan. Built with GWTP#1?
COLLEGE PRV	ACTIVE		9/13/1995	Vault	Triad/Holmes	10992	
UPPER SHERWIN PRV	ACTIVE		7/1/1973	Vault	Gram/Phillips	10180	
MERIDIAN BLVD PRV	ACTIVE		5/23/2003	Vault	MCWD	10871	(10866 in GIS) AE Concrete 4212 Chamber vault?
SIERRA STAR PRV	ACTIVE		1/13/2000	Vault	Triad/Holmes	10700	
BIGWOOD PRV	ACTIVE		5/10/2002	Vault	Triad/Holmes	11305	
HIDDEN VALLEY PRV	ACTIVE		6/30/1995	Vault	MCWD	10328	
CANYON LOWER PRV	ACTIVE		6/8/2001	Vault	Triad/Holmes	10693	
OLD PUBLIC PRV	ACTIVE		n/a	Vault		10886	10886 only references existing vault
CANYON UPPER PRV	ACTIVE		5/10/2004	Vault	MCWD/White Rock	11474	
COMMUNITY CENTER PRV	ACTIVE		9/18/2003	Vault	Triad/Holmes	11041	
KNOB HILL PRV	ACTIVE		1/1/2010	Vault		12199	12199 only references existing vault
GONDOLA PRV	ACTIVE		9/18/2003	Vault	Triad/Holmes	11028	
KNOLLS PRV	ACTIVE		n/a	Vault		11551	11551 only references existing vault
DAVISON PRV	ACTIVE		5/12/1992	Vault	MCWD	10329	
KNOLLS PS PRV	ACTIVE	CMU	1/1/1986	Building	Gram/Phillips	10951	Shared building with Knolls Pump Station
TIMBER RIDGE PRV	ACTIVE	CMU	7/2/1984	Building	Gram/Phillips	10453	Shared building with Timber Ridge Pump Station
BLUFFS PRV	ACTIVE	CMU	8/1/2008	Building	Engineered Fluid	11879	Shared building with Bluffs Pump Station
OLD MAMMOTH PRV	ACTIVE		9/10/2008	Vault	MCWD	11861	
MAMMOTH GREEN PRV	ACTIVE		5/16/2002	Vault	Triad/Holmes	12197	
BLOCKHOUSE PRV	ACTIVE	CMU	n/a	Building		11239	Limited records on design of Blockhouse (former chlorination building, 10114)
SHERWIN PRV	ACTIVE		7/5/1973	Vault	Gram/Phillips	10193	(10185 in GIS)

T2 FILL PRV	ACTIVE	CMU	4/18/1978	Building	Gram/Phillips	10289	Shared building with Juniper Ridge Pump Station
T4 CONTROL VALVE	ACTIVE	CMU	7/2/1984	Building	Gram/Phillips	10453	Shared building with Timber Ridge Pump Station
RANCH ROAD PRV	ACTIVE		6/1/2016	Vault	MCWD	12277	

Potable Water Pump Stations

Name	Status	Year Constructed	Building / Vault	Designer / Contractor	AsBuilt	Notes
BLUFFS PS	ACTIVE	8/1/2008	Building	Engineered Fluid	11879	Shared building with Bluffs PRV
KNOLLS PS	ACTIVE	4/1/1986	Building	Gram/Phillips	10951	Shared building with Knolls PRV
TIMBER RIDGE PS	ACTIVE	7/2/1984	Building	Gram/Phillips	10453	Shared building with Timber Ridge PRV and T4 control valve
JUNIPER RIDGE PS	ACTIVE	9/28/1979	Building	Gram/Phillips	10289	Shared building with Juniper Ridge PRV

Sewer Lift Stations

Name	Status	Construction Material	Year Constructed	Building / Vault	Designer / Contractor	AsBuilt	AsBuilt Notes
BLUFFS LS	ACTIVE	SUBSURFACE	7/31/1996	Building	Triad/Holmes	10222, 10223	
RAINBOW LS	ACTIVE	SUBSURFACE	5/14/1974	Building	Gram/Phillips	10079	
EAST MARY LS	ACTIVE	ABOVE GROUND	1/1/1976	Building	Gram/Phillips	10623	
SHADY REST LS	ACTIVE	SUBSURFACE	10/17/1973	Vault	Gram/Phillips	10250, 10252	"Pump Station #7" - sheet 27
SHERWIN CG LS	INACTIVE	SUBSURFACE	7/31/1973	Vault	Gram/Phillips	10193	
COLDWATER LS	ACTIVE	SUBSURFACE	7/30/1973	Vault	Gram/Phillips	10172	
TAMARACK LS	ACTIVE	ABOVE GROUND	4/1/1974	Building	Gram/Phillips	10589	
FALLS TRACT LS	ACTIVE	ABOVE GROUND	1/15/1975	Vault	Gram/Phillips	10616	
EAST TWIN LS	ACTIVE	SUBSURFACE	10/17/1973	Building	Gram/Phillips	10251, 10252	"Pump Station No. 6" - sheet 26, 27
WEST TWIN LS	ACTIVE	ABOVE GROUND	10/17/1973	Building	Gram/Phillips	10250, 10252	"Pump Station No. 5" - sheet 25
TWIN FALLS LS	ACTIVE	SUBSURFACE	10/17/1973	Building	Gram/Phillips	10250, 10252	"Pump Station No. 4" - sheet 25
SUMMER HOMES LS	ACTIVE	SUBSURFACE	4/1/1974	Building	Gram/Phillips	10611	
WEST MARY LS	ACTIVE	SUBSURFACE	10/17/1973	Vault	Gram/Phillips	10250, 10252	"Pump Station #3" - sheet 25, 27

Production Wells

Name	Building / Vault	Building Dimensions	Production Capacity (GPM)	Construction Material	Year Constructed	Codes referenced	Design Ground Snow Load	AsBuilt	Designer / Contractor	Notes
Well 1	Building		208		2015					Building reconstructed 2015
Well 6	Building		415							
Well 10	Building		848							
Well 15	Vault		911							
Well 16	Vault		123							
Well 17	Vault		184							
Well 18	Vault		126							
Well 20	Vault		111							
Well 25	Building		400		2007					
Well 32	Building		200		2022					

Water Main Segments within 50' of Active Faults

BARCODE	DIAMETER	LINENO_	MATERIAL	OWNER	PZONE	TYPE	Install Date	Length (ft)
11474	8	J81074	DIP	MCWD	1	DISTRIBUTION MAIN	9/1/2004	5
11474	8	J81075	DIP	MCWD	1	DISTRIBUTION MAIN	9/1/2004	44
11473	12	J81077	DIP	MCWD	2B	DISTRIBUTION MAIN	9/1/2004	433
11474	12	J81080	DIP	MCWD	1	DISTRIBUTION MAIN	9/1/2004	247
11474	6	J81081	DIP	MCWD	1	DISTRIBUTION MAIN	9/1/2004	19
11474	12	J81085	DIP	MCWD	1	DISTRIBUTION MAIN	9/1/2004	36
11785	10	J81086	DIP	MAM WEST	2B	DISTRIBUTION MAIN	8/1/2007	5
12419	8	K71048	DIP	MCWD	1	DISTRIBUTION MAIN	1/1/1971	97
12416	6	K71050	DIP	MCWD	1	DISTRIBUTION MAIN	1/1/1971	22
12416	8	K71051	DIP	MCWD	1	DISTRIBUTION MAIN	1/1/1971	1
12416	6	K71052	DIP	MCWD	1	HYDRANT LATERAL	1/1/1971	2
11785	10	J81087	DIP	MAM WEST	2B	DISTRIBUTION MAIN	8/1/2007	3
11785	10	J81088	DIP	MAM WEST	2B	DISTRIBUTION MAIN	8/1/2007	3
11785	10	J81099	DIP	MCWD	2B	DISTRIBUTION MAIN	8/1/2007	4
11864	6	J81111	DIP	MAM. SKI*	1	HYDRANT LATERAL	8/1/2007	17
11864	6	J81112	DIP	MAM. SKI*	1	HYDRANT LATERAL	8/1/2007	102
11761	6	K71001	DIP	MCWD	1	HYDRANT LATERAL	7/1/2007	8
11761	6	K71002	DIP	MCWD	1	HYDRANT LATERAL	7/1/2007	2
11761	8	K71003	DIP	MCWD	1	DISTRIBUTION MAIN	7/1/2007	26
11761	8	K71009	DIP	MCWD	1	DISTRIBUTION MAIN	7/1/2007	158
11762	12	K71010	DIP	MCWD	1	DISTRIBUTION MAIN	7/1/2007	2
11762	12	K71020	DIP	MCWD	1	DISTRIBUTION MAIN	7/1/2007	263
11762	8	K71024	DIP	MCWD	1	DISTRIBUTION MAIN	7/1/2007	8
11762	8	K71025	DIP	MCWD	1	DISTRIBUTION MAIN	7/1/2007	69
11931	8	J81082	DIP	MCWD	1	DISTRIBUTION MAIN	9/1/2009	246
12216	12	K71032	DIP	MCWD	1	DISTRIBUTION MAIN	8/1/2011	2
12216	12	K71035	DIP	MCWD	1B	DISTRIBUTION MAIN	8/1/2011	379
12416	8	K71060	DIP	MCWD	1B	DISTRIBUTION MAIN	1/1/2016	471

12416	8	K71051	DIP	MCWD	1	DISTRIBUTION MAIN	1/1/1971	0
12416	8	K71050	DIP	MCWD	1	DISTRIBUTION MAIN	1/1/1971	1
11785	12	J81002	DIP	MAM WEST	2B	DISTRIBUTION MAIN	8/1/2007	454
11479	12	J71005	DIP	MCWD	1	DISTRIBUTION MAIN	8/30/2005	418
10109	10	T91003	DIP	MCWD	UNK	DISTRIBUTION MAIN	1/1/1978	832
10109	10	T91004	DIP	MCWD	UNK	DISTRIBUTION MAIN	1/1/1978	33
11785	12	J81079	DIP	MCWD	1B	DISTRIBUTION MAIN	8/1/2007	626
11474	12	J81004	DIP	MCWD	2B	DISTRIBUTION MAIN	9/1/2004	15
11474	12	J81005	DIP	MCWD	1	DISTRIBUTION MAIN	9/1/2004	15
11474	12	J81006	DIP	MCWD	1	DISTRIBUTION MAIN	9/1/2004	5
11474	6	J81069	DIP	MCWD	1	HYDRANT LATERAL	9/1/2004	35
11474	6	J81076	DIP	MCWD	1	HYDRANT LATERAL	9/1/2004	5
11474	8	J81071	DIP	MCWD	1	DISTRIBUTION MAIN	9/1/2004	5
11474	12	J81072	DIP	MCWD	1	DISTRIBUTION MAIN	9/1/2004	10
10485	6	K71042	DIP	COURCHEV *	1	DISTRIBUTION MAIN	9/9/9999	168
10485	6	K71046	DIP	COURCHEV *	1	DISTRIBUTION MAIN	9/9/9999	150
11775	8	J81012	DIP	MCWD	1	DISTRIBUTION MAIN	7/1/2007	236
11774	8	K71007	DIP	MCWD	1	DISTRIBUTION MAIN	7/1/2007	72
11775	6	J81039	DIP	MCWD	1	DISTRIBUTION MAIN	7/1/2007	11
10484	6	J81027	STL	CHAMONIX*	1	DISTRIBUTION MAIN	9/9/9999	150
10484	6	J71017	STL	MCWD	1	DISTRIBUTION MAIN	9/9/9999	100
11774	6	K71029	STL	MCWD	1	DISTRIBUTION MAIN	6/1/2007	18
11774	6	K71030	STL	MCWD	1	DISTRIBUTION MAIN	6/1/2007	5
11474	6	J81073	STL	MCWD	1	DISTRIBUTION MAIN	9/1/2004	11

Sewer Main Segments within 50' of Active Faults

BARCODE	LINE_NO	TYPE	DIAMETER	MATERIAL	OWNER	SOURCE	STATUS	SLIP LINING	INSTALL DATE	Length (ft)	SLIP LINE YEAR
10485	K81032	GRAVITY MAIN	6	ACP	COURCHEVE*	ASBUILT	ACTIVE	N	1/1/1972	206	<Null>
10485	K71007	GRAVITY MAIN	6	ACP	COURCHEVE*	ASBUILT	ACTIVE	N	1/1/1972	148	<Null>
10485	K71006	GRAVITY MAIN	6	ACP	COURCHEVE*	ASBUILT	ACTIVE	N	1/1/1972	86	<Null>
11864	J81030	GRAVITY MAIN	6	ACP	MAM SKI &*	ASBUILT	ACTIVE	N	1/1/1973	97	<Null>
11864	J81032	GRAVITY MAIN	8	ACP	MAM SKI &*	ASBUILT	ACTIVE	N	1/1/1973	272	<Null>
11864	J81037	GRAVITY MAIN	8	ACP	MAM SKI &*	ASBUILT	ACTIVE	N	1/1/1973	88	<Null>
11864	J81038	GRAVITY MAIN	8	ACP	MAM SKI &*	ASBUILT	ACTIVE	N	1/1/1973	100	<Null>
10484	J71007	GRAVITY MAIN	6	PVC_SDR35	MCWD	ASBUILT	ACTIVE	N	1/1/1972	398	<Null>
10163	T91006	GRAVITY MAIN	8	ACP	MCWD	ASBUILT	ACTIVE	Y	6/2/1975	314	2014-2015
10163	T91003	GRAVITY MAIN	8	ACP	MCWD	ASBUILT	ACTIVE	Y	6/2/1975	243	2014-2015
11785	J81009	GRAVITY MAIN	8	ACP	MCWD	ASBUILT	ACTIVE	N	8/1/2007	339	<Null>
10465	J81010	GRAVITY MAIN	8	VCP	MCWD	ASBUILT	ACTIVE	N	1/1/1972	310	<Null>
10484	J81004	GRAVITY MAIN	8	ACP	MCWD	ASBUILT	ACTIVE	N	1/1/1972	284	<Null>
10484	K71004	GRAVITY MAIN	6	ACP	MCWD	ASBUILT	ACTIVE	N	1/1/1972	353	<Null>
<Null>	<Null>	GRAVITY MAIN	4	Unknown	MMSA	<Null>	Active?	<Null>	<Null>	2810	<Null>

SEISMIC AND STRUCTURAL SERVICES

April 12, 2024

REQUEST FOR QUALIFICATIONS

ATTACHMENT 3 – SAMPLE MASTER SERVICES AGREEMENT



**AGREEMENT BETWEEN
MAMMOTH COMMUNITY WATER DISTRICT AND
_____ FOR STRUCTURAL AND SEISMIC ENGINEERING SERVICES**

THIS AGREEMENT is made effective as of _____, 2024 in Mammoth Lakes, California, between Mammoth Community Water District (“District”) and _____ (“Consultant”), concerning as-needed structural and seismic engineering services.

Recitals:

WHEREAS, the District desires to retain the services of Consultant on an as-needed basis; and

WHEREAS, Consultant desires to perform as-needed seismic, structural, and related engineering services requested by the District on the terms and conditions set forth below;

Agreement:

NOW, THEREFORE, the parties agree as follows:

1. **Description of Work.**

The work requested of the Consultant by the District shall be performed on a task order basis. Upon a written request by the District, Consultant shall prepare a specific scope of work, budget, and schedule for each task order. Each task order shall reference this Agreement, and include exhibits setting forth the scope of work, cost and schedule. Upon written approval by the District to proceed, the Consultant shall proceed with completion of the work under the applicable task order. Each task order shall state that it is subject to the Agreement and each of its terms, which shall be incorporated by reference into the task order.

Consultant shall provide all labor, equipment, material and supplies required or necessary to properly, competently, and completely perform the work or render the services under this Agreement. Consultant shall determine the method, details and means of doing the work or rendering the services, in cooperation with District staff.

2. **Compensation.**

The total cost of the work described in each task order shall be specified in the task order, and shall not exceed the approved cost unless amended by the District in writing. Compensation shall be on a time and materials basis, using the rate schedule included as part of the task order. The task order cost information shall be summarized by primary work breakdown and deliverables. Each task order shall be identified as an “Attachment” to this Agreement.

3. Term of Agreement.

This Agreement shall become effective on the date first above-stated and will continue in effect for five years from such date, unless sooner terminated as provided in paragraph 10.

4. Payment for Services.

Consultant shall submit to the District itemized bills for the services rendered. If the work is satisfactorily performed, the District shall pay such bill within 30 days after its receipt. Should the District dispute any portion of any bill, the District shall pay the undisputed portion within the time stated above, and at the same time, advise the Consultant in writing of the disputed portion.

5. Documents and Electronic File Deliverables.

All documents, including drawings, specifications, and computer software prepared by Consultant pursuant to this Agreement, are instruments of service in connection with the specific task order for which they were prepared. They are not intended or represented to be suitable for reuse by District or others for other than the task order services for which they were prepared. Any reuse without written verification or adaptation by Consultant for the specific purpose intended will be at District's sole risk and without liability or legal exposure to Consultant; and District shall indemnify and hold harmless Consultant against all claims, damages, losses, and expenses including attorney's fees arising out of or resulting from such reuse. All documents and electronic file deliverables, as listed and described in each Task Order, shall be provided to the District in their most current version, in the event that either party exercises the termination rights under Paragraph 10.

6. Compliance with Laws.

Consultant agrees that it shall conduct its work and perform its services in compliance with all laws and regulations of the County of Mono, State of California, and any officer, department, or agency thereof, as well as other laws and regulations as may be applicable thereto.

7. Errors and Omissions Insurance.

Consultant shall have such errors and omissions insurance for the benefit of the District as shall protect the Consultant, its officers, officials, directors, employees and agents from claims based on alleged errors or negligent acts or omissions which may arise from Consultant's operations or performance of professional services under this Agreement, whether claims be made during or subsequent to the term of this Agreement, and whether such operations or performance be by Consultant or its employees, consultants, agents or anyone else directly or indirectly employed by any of the foregoing. The amount of this insurance shall not be less than \$2,000,000.

Said policy shall be continued in full force and effect during the term of this Agreement and for a period of three (3) years following the completion of the services provided for in this Agreement. In the event of termination of said policy, new coverage shall be obtained for the required period to insure for the prior acts of Consultant during the course of performing services under the terms of this Agreement.

Consultant shall provide to the District a certificate of insurance on a form acceptable to the District indicating the deductible or self-retention amounts and the expiration date of said policy, and shall provide renewal certificates within ten (10) days after expiration of each policy term.

8. General Insurance.

Consultant, at its sole cost and expense, shall procure and maintain for the duration of this Agreement the following types and minimum coverage limits of insurance:

<u>Type</u>	<u>Limits</u>	<u>Scope</u>
General liability	\$1,000,000 per occurrence	at least as broad as ISO CG 0001
Automobile liability	\$1,000,000 per occurrence	at least as broad as ISO CA 0001, Code 1, any auto
Excess/Umbrella liability	\$1,000,000	
Workers' compensation	Statutory limits	

The general and automobile policies shall be endorsed to name the District, its directors, officers, officials, employees, volunteers and agents as additional insureds regarding liability arising out of the services rendered pursuant to this Agreement. Consultant shall provide the District with ISO CG 2010 endorsement form or equivalent. The coverage shall contain no special limitations on the scope of protection afforded to the District, its directors, officers, officials, employees, agents or volunteers. Consultant's coverage shall be primary and shall apply separately to each insured against whom a claim is made or suit is brought, except with respect to the limits of the insurer's liability. District's insurance, if any, shall be excess and shall not contribute with Consultant's insurance. The workers' compensation policy shall be endorsed to include a waiver of subrogation against the District, its directors, officials, officers, employees, volunteers and agents.

The insurance is to be placed with insurers with a current A.M. Best's rating of A:VII or better, unless otherwise acceptable to District. Prior to commencing the services provided for herein, Consultant shall provide to District original endorsements evidencing this insurance signed by a person authorized to bind coverage on behalf the insurer(s). The certificates and policies shall provide that 30 days' written notice of any material change, reduction of coverage or cancellation of the insurance policies will be provided to the District. The requirements as to the types, limits, and the District's approval of insurance coverage to be maintained by the

Consultant are not intended to and shall not in any manner limit or qualify the liabilities and obligations assumed by the Consultant under the Agreement. In addition, in the event any change is made in the insurance carrier, policies or nature of coverage required under this Agreement, Consultant shall notify the District prior to making such changes.

9. Indemnification and Hold Harmless.

Consultant shall protect, indemnify, hold harmless and defend the District, its directors, officials, officers, employees, volunteers and agents, from and against any and all suits, actions, judgments, legal or administrative proceedings, arbitrations, claims, demands, causes of action, damages, liabilities, interest, attorney's fees, fines, penalties, losses, costs and expenses of whatsoever kind or nature, including but not limited to those arising out of injury to or death of Consultant's employees, which arise out of, pertain to, or relate to the negligence, recklessness, or willful misconduct of Consultant, its employees, agents or sub-consultants (hereinafter collectively referred to as "Claims" or singularly referred to as a "Claim"), except to the extent the sole negligence or willful misconduct of an indemnified party proximately causes the loss, claim, demand, cost, suit, judgment, penalty, fine, interest, attorney's fees, action, cause of action, damage, expense or liability.

Neither termination of this Agreement nor completion of the acts to be performed under this Agreement shall release Consultant from its obligations under this paragraph 9, as to any Claims, so long as the event upon which such Claim is predicated shall have occurred prior to the effective date of any such termination or completion and arose out of, pertained to, or related to performance or operations under this Agreement by Consultant, its employees, agents or consultants, or the employee, agent or consultant of any one of them.

Submission of insurance certificates or submission of other proof of compliance with the insurance requirements in this Agreement does not relieve Consultant from its obligations under this paragraph 9. The obligations of this paragraph 9 shall apply whether or not such insurance policies shall have been determined to be applicable to any of such damages or claims for damages.

The District may withhold from payment due Consultant hereunder, with 30 days written notice to Consultant, such amounts as, in the District's opinion, are sufficient to provide security against all loss, damage, expense, penalty, fine, cost, claim, demand, suit, cause of action, judgment, or liability covered by the foregoing provisions.

In any and all claims against the District, or its directors, officers, officials, directors, employees, volunteers or agents, by any employee of the Consultant, any sub-consultant, anyone directly or indirectly employed by any of them or anyone for whose acts any of them may be liable, the obligations under this paragraph 9 shall not be limited in any way by any limitation on the amount or type of damages, compensation or benefits payable by or for the Consultant or any sub-consultant under Worker's Compensation acts, disability benefit acts or other employee benefit acts.

10. Termination.

This Agreement may be terminated at any time and for any reason by the District upon five days advance written notice to Consultant. In the event of such termination, Consultant is to be fairly compensated for all work performed to the date of termination as calculated by the District based on paragraph 2 hereof; provided that such compensation shall not in any case exceed the maximum sum set forth in paragraph 2 hereof. Compensation under this paragraph shall not include costs related to lost profit associated with the expected completion of the work or other such payments relating to the benefit of the bargain.

11. Entire Agreement.

This writing constitutes the entire agreement between the parties relative to the services specified herein, and no modifications hereof shall be effective unless and until such modification is evidenced by a writing signed by both parties to this Agreement. There are no understandings, agreements, conditions, representations, warranties, or promises with respect to the subject matter of this Agreement except those contained in or referred to in this writing.

12. Independent Contractor.

It is expressly understood and agreed by the parties that Consultant's relationship to the District is that of an independent contractor. All persons hired by Consultant and performing the Work shall be Consultant's employees or agents. Consultant and its officers, employees and agents are not District employees, and they are not entitled to District employment salary, wages or benefits. Consultant shall pay, and District shall not be responsible in any way for, the salary, wages, workers' compensation, unemployment insurance, disability insurance, tax withholding, and benefits to and on behalf of Consultant's employees. Consultant shall, to the fullest extent permitted by law, indemnify District, and its officers, employees, volunteers and agents, from and against any and all liability, penalties, expenses and costs resulting from any adverse determination by the federal Internal Revenue Service, California Franchise Tax Board or other federal or state agency concerning Consultant's independent contractor status. Successors and Assignment.

This Agreement shall be binding on the heirs, successors, executors, administrators, and assigns of the parties; however, Consultant agrees that it will not assign, transfer, convey, or otherwise dispose of this Agreement or any part thereof, or its rights, title or interest therein, or its power to execute the same without the prior written consent of the District.

13. Severability.

If any provision of this Agreement is held to be unenforceable, the remainder of this Agreement shall be severable and not affected thereby.

14. Waiver of Rights.

Any waiver at any time by either party hereto of its rights with respect to a breach or

default, or any other matter arising in connection with this Agreement, shall not be deemed to be a waiver with respect to any other breach, default or matter.

15. Remedies not Exclusive.

The use by either party of any remedy specified herein for the enforcement of this Agreement is not exclusive and shall not deprive the party using such remedy of, or limit the application of, any other remedy provided by law.

16. Notices.

All notices, statements, reports, approvals, or requests or other communications that are required either expressly or by implication to be given by either party to the other under this Agreement shall be in writing and signed for each party by such officers as each may, from time to time, authorize in writing to so act. All such notices shall be deemed to have been received on the date of delivery if delivered personally or by a commercial overnight delivery service, or three days after mailing if enclosed in a properly addressed and stamped envelope and deposited in a United States post office for delivery. Unless and until notified otherwise in writing, all notices shall be addressed to the parties at their addresses shown below:

Mammoth Community Water District
Attn: General Manager
1315 Meridian Blvd., P.O. Box 597
Mammoth Lakes, California 93546

Attn: _____

Consultant Address
Consultant Address

17. Sub-consultants.

No subcontract shall be awarded or an outside consultant engaged by Consultant unless prior written approval is obtained from the District. Any approved sub-consultant shall comply with the insurance requirements of paragraphs 8 and 9 hereof or be covered by Consultant's insurance.

18. Licensing.

Consultant represents that its professional employees working under this agreement are licensed by the California Board for Professional Engineers, Land Surveyors, and Geologists, and that Consultant's license(s) is in good standing and will be kept in good standing during the term of this Agreement.

IN WITNESS WHEREOF, the parties execute this Agreement on the day and year first above written.

MAMMOTH COMMUNITY WATER DISTRICT

By: _____

Thomas R. Smith
President, Board of Directors

Attest:

By: _____

Mark Busby
Secretary, Board of Directors

By: _____

Name: _____

Title: _____

